

OC SMART Pro

Plug & play Dental unit



ACE Smart Pro : Most advanced & Compact Dental Unit

Plug & Play Dental unit with complete customization & flexibility for your Practise

The innovative ACE Smart Pro Dental Unit combines the best attributes of self-contained mobility and a high-tech design that is perfectly suited for professional in-office use. The unit offers flexibility and comfort for both simple and complex treatments. Experience the technical refinement with a wide range of instruments of your choice.

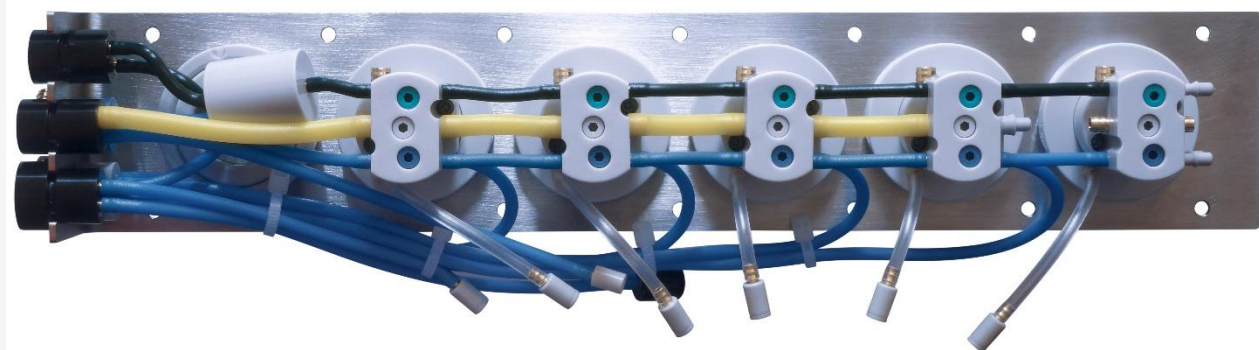
The ACE Smart Pro Dental Unit is a high quality product equipped with a "German Pneumatic automated drive system" free of complex electronics carrying a worldwide patent. This is one of the most advanced pneumatic dental drive system available in the world today backed by world famous German precision engineering.

The highly advanced and patented pneumatic German technology of the ACE Smart Pro delivery systems augurs well with its compact size and seamless integration. The systems' sophisticated platform is capable of handling three or more instruments which can be integrated at any future phase of expansion or modernization. The air and water flow within the unit, at each stage, are regulated by pneumatic micro check valves, relays and regulators which are specially made in-house at our manufacturing facility in Germany. The ACE Smart Pro unit is controlled by a touch pad to monitor the scaler power, micro-motor controls & programming of the instruments with a small display window.

Flexibility:

- Configuration flexibility for use with 1x 3way syringe, 1x piezo scaler (Satelac or similar), 1x brushless electric micro-motor (Swiss), 1x 4hole turbine, Multiple micro-motors with the same driver can be used within the same system.
- Blue tooth enabled android touch tab or touch keypad can be used from any android device to determine the settings of instruments. Multiple doctors can save their preferred program which is password protected.
- Tubing on dentist module can easily be replaced via quick coupling;

Patented German Automatic Pneumatic Valve System



Easy Coupling System from Unit to handpiece



User Friendly:

- 1st hand piece out pneumatic safety lock-out system and automatic recognition of instruments.
- Unbreakable & light syringe with removable head for disinfection.
- One switch for water, air and electricity to protect your chair and your clinic.
- Self service and maintenance friendly with easy spares.
- Balanced brushless Swiss micro-motor from 1500 up to 40,000 rpm. Electronic torque control up to 3.5 Ncm. and has a dual lighting i.e. UV light for composite cutting & LED white light for general use.
- Multiple functional handpieces like Safe Relax (Crown & Bridge removal), Niti control Endo handpiece etc can be used on the micro-motor.
- The water bottle has an automated pressure regulator with an auto pressure release valve for exchanging or refilling the bottle. Disinfectant can be also used for sterilizing the hoses.

**Patented 35g
3way Syringe**



**High Speed
Electric
Handpiece**



**Niti Control
Endo
Handpiece**

Safer Treatment

- Water-supply hosing are made of material that slows the growth of bacteria, fungi & biofilm.
- Water bottle is close to instruments for lesser chance of contamination in tubing's.
- Out-drop valves to prevent suck back of contaminated water into delivery system tubing.
- All instrument holders and hoses can be removed for disinfection.

Easy Unit Side Coupling



Finest Quality anti-bacterial hoses certified in Germany

Hoses

- Our water-supply hoses are made of material that slows the growth of bacteria, fungi & biofilm. The hoses are tested according to DVGW (German Technical & Scientific Association for Gas & Water) Worksheet W270, KTW (Plastics in Drinking water regulation) & CE compliant (Medical devices directive 93/42/EEC)
- The outer hose is made in our in-house facility with high grade special elastomers and are nonsticky & very long lasting



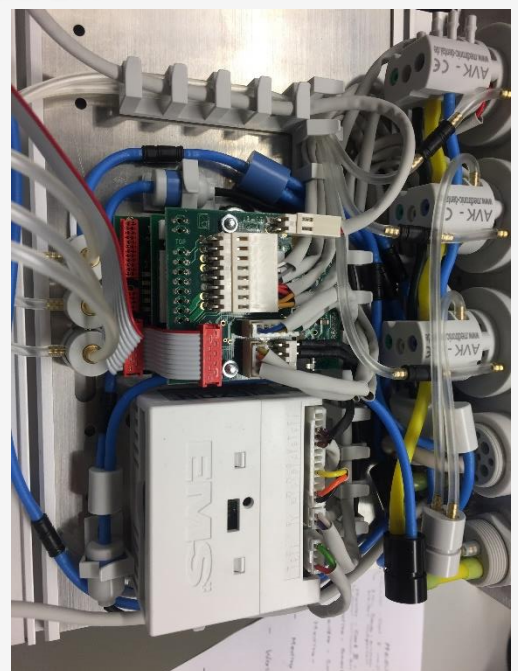
Spares & Accessories

- Our Water Bottle System, unbreakable 3F-Syringe, unit side couplings and connectors, valves and regulators (including pressure regulators and switches, control and servo valves), connection elements etc. are made with highly versatile engineering polymer, with low friction and low wear, toughness and high resistance to repeated impacts, long-term fatigue endurance, wide end use temperature range, injection moulded and machined at our factory.



***Water-bottle with
Inbuilt mesh filter***

- All spares are available with us 365 days a year. The MOST Valuable advantage of an ACE300SA unit is that the repairs & maintenance can be carried out without using any tools as most spares are assembled with easy handling design technology which guarantees continuity of your dental practice.



Compact Design

German Engineering

- All the spares are designed and manufactured at our facility in Germany under highly controlled quality standards with sophisticated and precision machinery. The raw materials used are well researched and procured only from the best in the world.
- Modular delivery unit has a choice of 2, 3, 4 or 5 Instruments in any combination.
- Future upgrades can be very easily implemented.
- Position of the instrument can be easily replaced by our patented quick couplings
- Available in Retrofit, dental cart, cabinet & dental chair mount unit models from basic to most advanced system.
- Spares made from high quality engineering polymer with long term fatigue endurance.
- Absolutely modular to fit any setting in the smartest design.





tei[®]
dental
passion for innovation

European Certification :



B-138, GF, Mohammadpur, Bhikaji Cama Place, New Delhi - 110 066
Tel: +91 11 4155 0193 / Dir: +91 99102 11888
Mail: tei@teidental.com | URL: www.teidental.com
CIN: U51507DL1996PTC079234