

*Beyond a mirror!*

# Yirro+

UHR



noSPOT  
technology



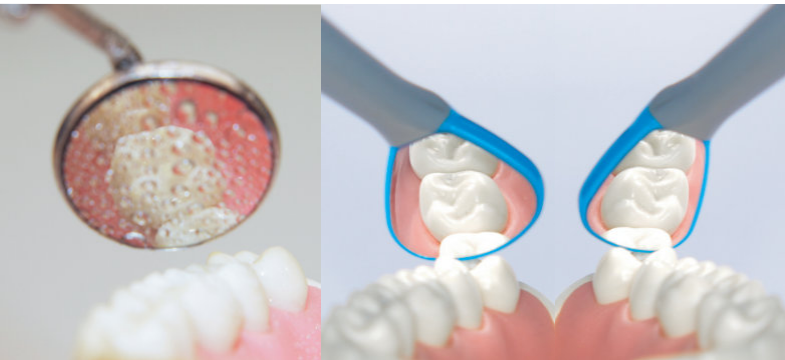
## ultimate clear vision

Yirro-plus® dental mirror system  
product brochure

# Yirro-plus® - ultimate clear vision a controllable air flow blowing clean your mirror

## THE KEY TO COMFORT

Existing dental mirrors offer reasonable clarity, but during precise actions when removing material, during polishing or the elimination of tartar, the cooling spray and grindings inevitably cover your indirect vision. If you wish to increase your efficiency and work in a more comfortable posture, Yirro-plus offers you significant added value by means of a controllable air flow, cleaning your easy detachable, light-weight, ultra-reflective mirror while you work.



**UHR**

Ultra High Reflection



Extreme Protect Coating

**noSPOT**  
technology

noSPOT technology



User Centered Design



Airflow option

## UNIVERSAL SYSTEM

Yirro-plus® self cleaning dental mirror system is an independent, universal system, to be placed either at the side of the delivery unit or integrated, in a spare slot. Choose from our high-end automatic PREMIUM solution, with the extra option of a foot pedal or keep it simple with the convenient COMFORT system, using a fool-proof toggle switch.



## LET'S TALK ECONOMICS:

A Yirro-plus start set comes with enough handles and mirrors to treat as much as 400 patients. The handles are easy to detach by a magnet coupling. Replace boxes contain 6 mirror heads; enough to treat another 600 patients!

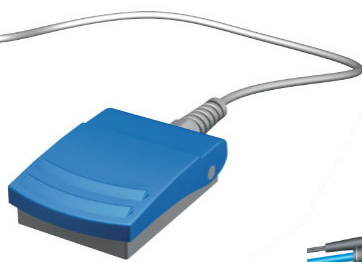
# Yirro-plus® PREMIUM system automatic ON/OFF switch



complete start set [art. 0426]  
automatically switched system, including:

4 handles,  
4 mirror heads [2x no.0 / 2x no.2]  
1 cleaning box, 4 no-SPOT autoclave caps  
docking station with air regulation  
air connection supply [for 3-6 bar]  
power connection supply [for 100-240 VAC]

optional foot switch [art. 268]  
for ON/OFF switching of air flow  
in between your treatment



"I am very pleased with my Yirro mirror. It is a simple idea and makes working on upper teeth much faster, the image is much brighter ... and I can turn the lighting down on my loupes, thus I can use the battery longer. Thanks! Robin."

Dr. Robin Horton, Wayside Dental Practise, Harpenden, UK

"..in no time Yirro has evolved into an indispensable part of my armamentarium... an uninterrupted bility of the surgical field is preserved. irro-plus handles are light-weight and practical, and the system is easy to tall. It's simplicity of non moving parts guarantees nonmaintenance."

Dr. Jan Berghmans, Jan Berghmans Exclusief Endodontie, BXL, Belgium

"I really LOVE Yirro mirrors! ..... 'I am using the system daily on almost all treatments that require indirect vision - it allows me to work longer before the mirror needs cleaning. Only a quick waterspray on the mirror to remove dried debris... Uncomplicated and easy!'"

Hans Kristian Ognedal, Stavanger, Norway.

"... especially useful for wet preparations of any kind. In particular when locating root canals in endodontics...the extreme reflection is practical for working deep in the root canal and on severely discolored teeth."

Mr. Dr. Tomas Lang, microdentist in Essen, Germany.

# Yirro-plus® COMFORT system manual ON/OFF switch



complete start set [art. 0427]  
manually switched system, including:

4 handles,  
4 mirror heads [2x no.0 / 2x no.2]  
1 cleaning box, 4 no-SPOT autoclave caps  
docking station with air regulation  
air connection supply [for 3-6 bar; T-part & quick couplings]

A COMFORT start set includes 2 types of quick couplings:  
TYPE NW [art. 0247] - NW 2.7 quick coupling  
TYPE Polymale Q.D. [art. 0558] - Poly male Q.D. coupling

NW 2.7 connection [EU]



Poly male Q.D.connector  
1/4" [U.S.A. / Asia]

PLUG&PLAY - in case of an available exterior air connection,  
the COMFORT system is easy to plug in.

OPTIONAL female connection set NW 2.7 [art. 0388]  
OPTIONAL female connection set POLY Q.D. 1/4" [art. 0553]

## reusable handles & mirrors

article 0428  
Yirro-plus® handle 6-pack  
durable plastic, stainless steel



article 0009 [6-pack]  
Yirro-plus® mirror head no. 0  
13.4 mm flat HR mirror, reusable



article 0002 [6-pack]  
Yirro-plus® mirror head no. 2  
18.6 mm flat HR mirror, reusable

## PILOT 0-2

## cleaning and sterilization accessoires



article 0751  
Yirro-plus® PILOT 0-2 box  
6 handles, 3x mirror no.0, 3x mirror no.2  
with cleaning & sterilisation accessoires



article 0312  
Yirro-plus® Cleaning Box  
stainless steel, silicone



article 0514 [6-pack]  
Yirro-plus® noSPOT autoclave cap  
durable plastic

## Yirro-plus® integration dockings

online demo video



article 0323



article 0464



article 0548



article 0291



article 0532



article 0405



article 0720



article 0473



article 0517



article 0518



article 0330



article 0499



article 0491



article 0582

"I can now work  
without back pain!"

Dr. Katinka den Hartog,  
TP Hatert, Nijmegen,  
the Netherlands



# Yirro-plus® integration dockings

No rights can be derived from this table- we strive to offer correct information but errors may occur.

unit brand	included docking / adaptor	integration dockings available	article
A-DEC	YES [***]	[available 15 mm slot 99.0652.03 [A-dec], order through technician]	
AIREL	depends on delivery unit [#]	use special TUBE docking holder [#] on tube	
ANTHOS	YES		
BELMONT	YES [*] universal docking		
CART [Premium/Comfort]	YES [*] universal docking	TUBE docking holder ø13/ø22 mm	0291
CART [Premium]	YES [*] universal docking	MOBILE docking holder	0518
CART [Comfort]	YES [*] universal docking; extra space	MOBILE EXTENSION 16 mm docking holder	0330
CASTELLINI	YES		
CHIROMEGA	YES [*] universal docking		
DKL	YES		
DÜRR	YES	[available Dürr block 7600-070-16, order through technician]	
EPILUX	YES	TUBE docking ø13/ø22 mm	0291
FINNDENT	YES [*] universal docking		[#]
GALBIATI		C1 docking	0491
HEKA UNIC / UNICLINES		HEKA UNIGS docking	0323
HEKA UNICLINE		HEKA UNICLINE [***] / UNICLINE SIDE docking	0405
KAVO	YES	[COMFORT preferably mounted at the side]	
MIDMARK		C2 docking [MIDMARK/PLANMECA slot]	0517
MORITA	YES [*] universal docking		
NEW IDEM ALFA	YES	by use of Docking fixation clip	0532
OMS	depends on delivery unit	C1 docking or included adaptor docking with clip	0491/0532
PELTON & CRANE	depends on delivery unit	special slot/adaptor [#] in development	
PLANMECA COMPACT	YES [***]	C2 docking / PLANMECA SIDE docking holder	0517/0464
Q-DENT	YES		
QUETIN	depends on delivery unit [#]	with special TUBE docking holder [#] on tube	
SIRONA SINIUS	YES [*] universal docking	the SIRONA C2/4/5+ docking	0473
SIRONA TENEO	[**]	the SIRONA C2/4/5+ docking	0473
SIRONA TENEO [****]	YES [*] universal docking	the MOBILE EXTENSION 16 mm docking holder	0330
SIRONA INTEGRO		the SIRONA INTEGRO docking holder	0720
SIRONA C2+/C4+/C5+	[**]	the SIRONA C2/4/5+ docking	0473
SIRONA C8+	YES [*] universal docking		
STERN WEBBER	YES [*] universal docking		
STOMADENT	YES		
TRIDAC	YES [*] universal docking	[#]	
ULTRADENT	YES [*] universal docking	[#]	
YOSHIDA	YES [*] universal docking	combine with Desktop docking holder	0582
XO FLEX	YES [*] universal docking	combine with XO-2/XO-1 docking holder	0548 /0750

[\*] to be mounted exclusively on side of delivery unit    [\*\*] included adaptors can also be used

[\*\*\*] integration exclusively in spare slot    [\*\*\*\*] in case no spare slot is available    [#] in development

CONTACT OUR LOCAL DISTRIBUTOR IN YOUR AREA:

The Yirro-plus® system is a patent pending system and registered trademark, exclusively produced by DHM-dental, the Netherlands.

## technical specifications

### PREMIUM & COMFORT SYSTEM

mirror:  
angle 37° - ultra reflective dielectric front surface mirror - multi-layered coating - water and grease repellent - life span depends on use - 100 times minimum

handle:  
highTech impact resistant - heat resistant durable plastic [125°C - autoclavable]

docking:  
universal docking and standarts adaptor docking included  
special integration adaptors are separately available, see scheme on the left

connection:  
compressed air 3-6 bar

### PREMIUM SYSTEM

connection supply included: coupling hose 1.80 m length + air connection hose ø6 mm [1/4"] of 0.40 m length + Medical Power Adaptor [EN 60601-1] + T-part ø6 mm [1/4"]

### COMFORT SYSTEM

connection supply included:  
air connection hose [ø4 mm [5/32"] of 2 m length + T-part ø6 mm [1/4"]  
quick coupling NW 2.7 + Q.D. polymale 1/4" quick coupling

93/42 EEG 

DHM-dental B.V.  
Simon Stevinweg 48  
6827BT Arnhem  
the Netherlands  
+31 26 7370367  
www.dhm-dental.com  
info@dhm-dental.com

first class performance

